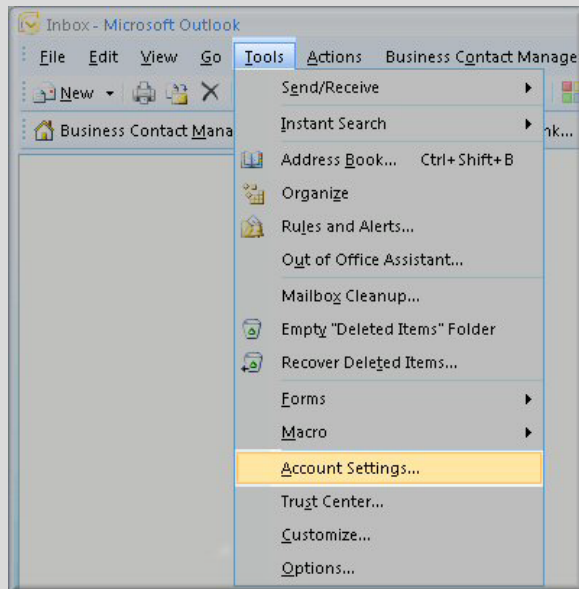
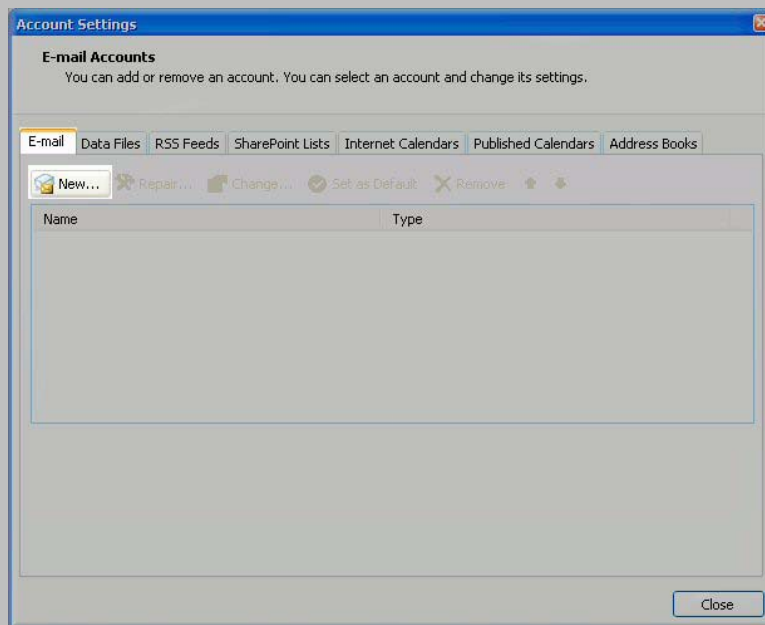




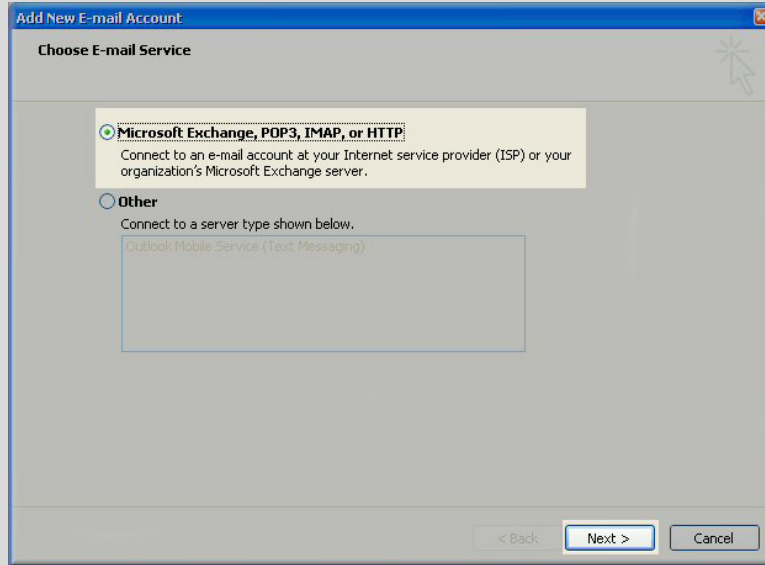
SETTING UP YOUR IIC E-MAIL IN MICROSOFT OUTLOOK 2007



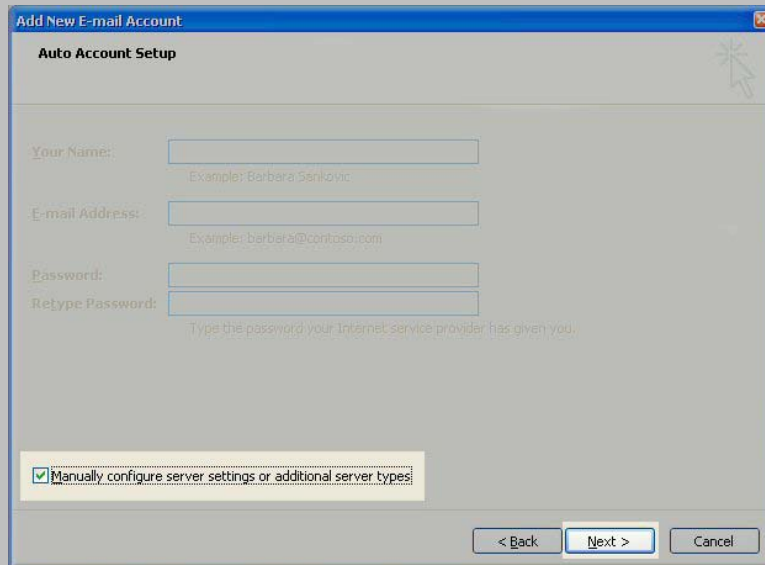
1) In Microsoft Outlook, from the **Tools** menu, select **Accounts Settings**.



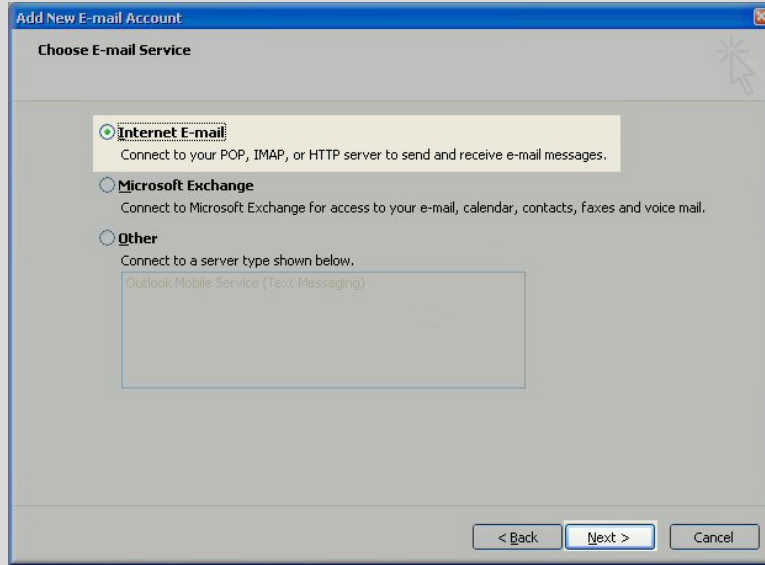
2) Click on the **Email** tab and click on the **New...** button.



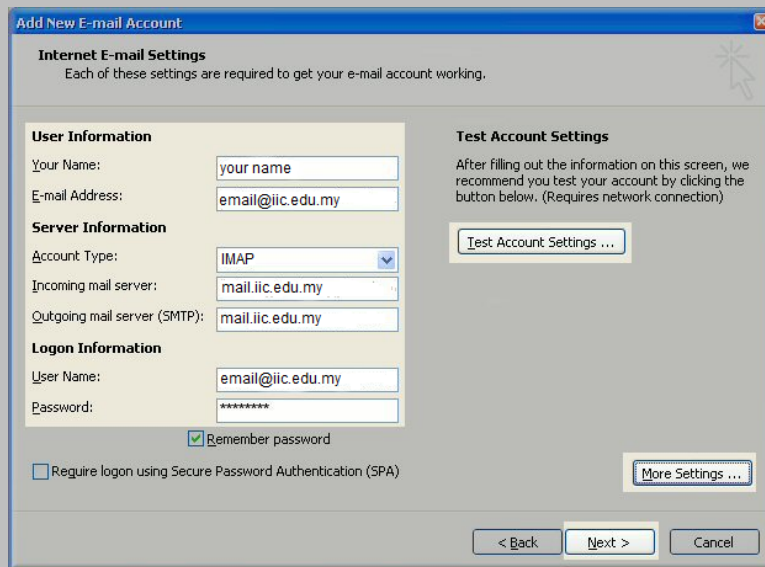
3) Next select **Microsoft Exchange, POP3, IMAP or HTTP** and click **Next**.



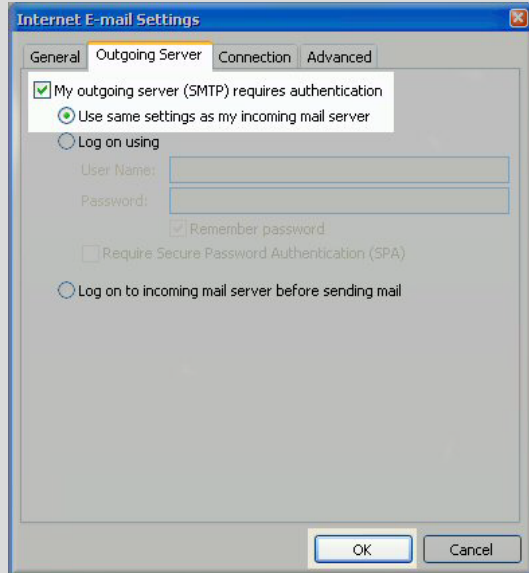
4) On the **Auto Account Setup** window check the **Manually configure server settings or additional server types** and click **Next**.



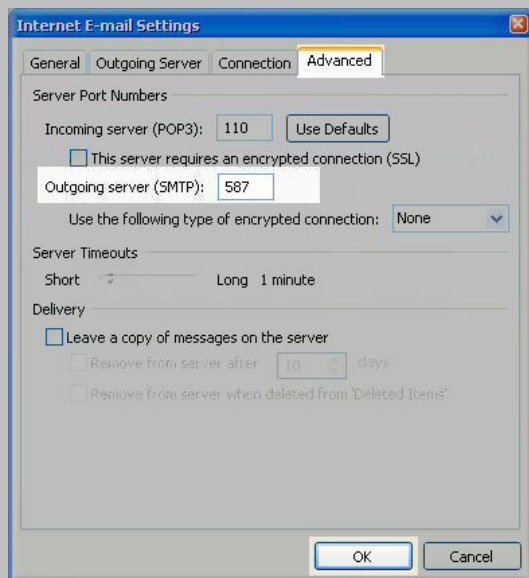
5) Select **Internet E-mail** option and click **Next**.



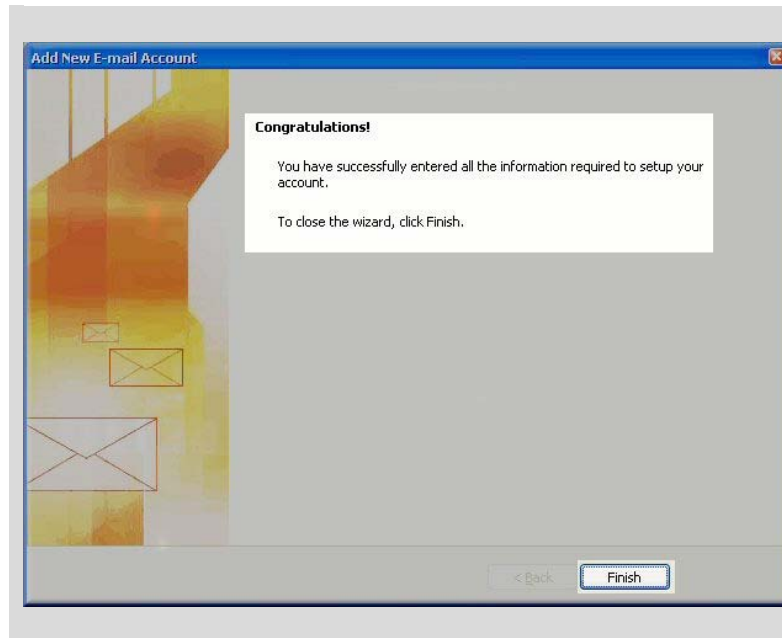
6) On the **Internet E-mail Settings** window, fill up your information as follows and then click **More Settings ...**



7) Click on the **Outgoing Server** tab, check **My outgoing server (SMTP) requires authentication**. Make sure **Use same setting as my incoming mail server** is also checked.



8) Click the **Advanced** tab, then change the **Outgoing server (SMTP)** port to **587**. Go to the **General** tab and enter “IIC Email” under **Mail Account**. Click **OK** back to the **Internet E-mail Settings** window. Click the **Test Account Settings** button and you should see all items with green check marks... Click the **Close** button to close the test window. Click **Next** to save your settings.



9) Click **Finish** to close the setup wizard.