

## ABOUT INTERNATIONAL ISLAMIC COLLEGE

International Islamic College (IIC) is a private higher education institution in Malaysia, wholly owned by International Islamic University Malaysia (IIUM). It is committed in becoming the preferred educational institution distinguished with overall excellence encompassing academic quality as well as spiritual piety.

IIC is recognized by the Ministry of Higher Education of Malaysia and the Malaysian Qualifications Agency, and is proud to be the first private College offering Open Distance Learning academic programmes.

Here at IIC, we put students' success at the heart of our mission, supporting every student from various backgrounds to achieve outstanding outcomes; preparing our students to thrive in their future endeavour.

### VISION

To be the Premier, Integrated and Sustainable Higher Education Institution



### MISSION

To offer holistic tertiary and vocational education in the region with world-class academic quality.

### UNIQUE SELLING PROPOSITION

Nourishing Humanity Through Integrated Knowledge.

## VALUES

|          |             |
|----------|-------------|
| <b>P</b> | Progressive |
| <b>R</b> | Responsible |
| <b>I</b> | Integrity   |
| <b>D</b> | Discipline  |
| <b>E</b> | Excellence  |

## ABOUT FACULTY OF SOCIAL SCIENCES

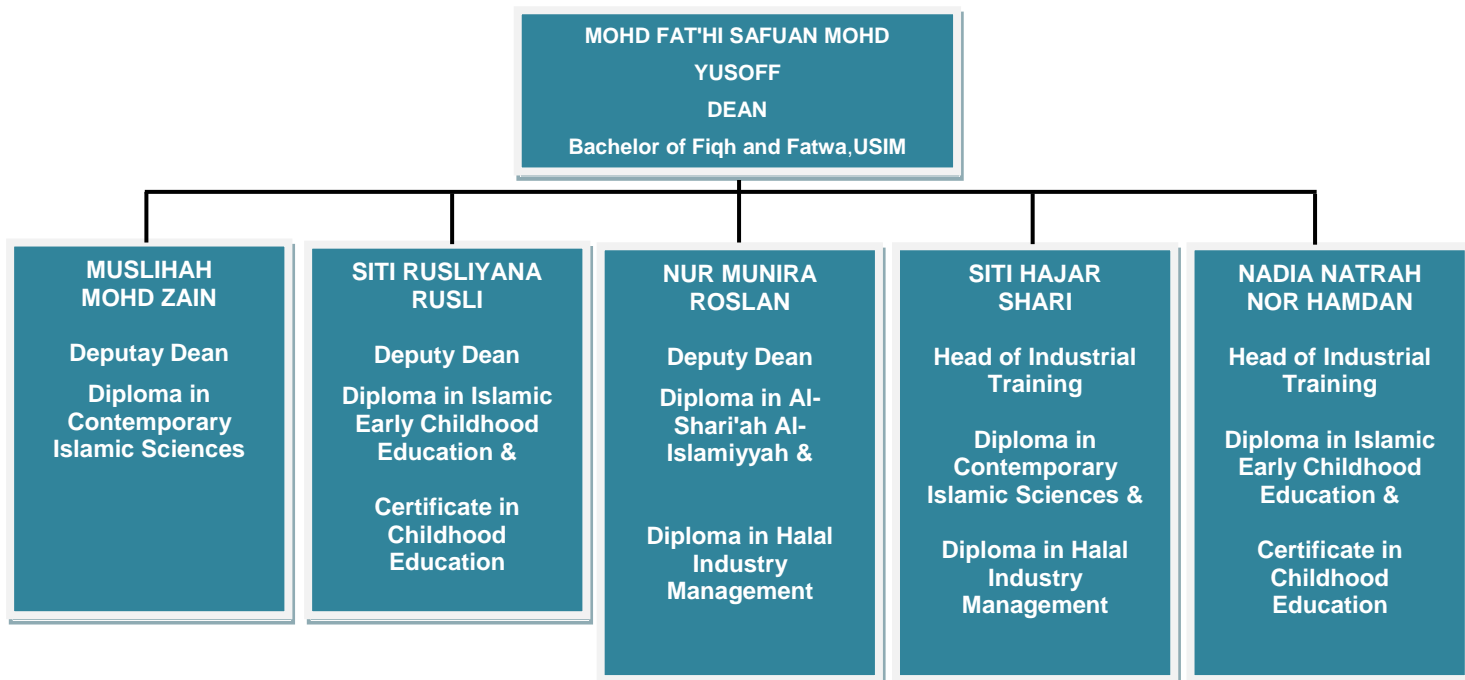
Faculty of Social Sciences (FSS) emphasizes on lifelong learning which integrates between the worldly knowledge and the knowledge of the hereafter. The school consists of highly trained lecturers dedicated towards achieving its mission and vision especially in producing global Islamic professionals. The school has always maintained close relationship between lecturers and students. The students are exposed not only to the theoretical part of the knowledge but also to the practical part of the course throughout their academic years.

At the moment, the school is focusing on four diplomas and one certificate programme which are Diploma in Islamic Early Childhood Education, are Diploma in Islamic Early Childhood Education OLD, Diploma in Contemporary Islamic Sciences, Diploma in Al-Shari'ah Al-Islamiyyah, Diploma in Halal Industry Management, Diploma in Halal Industry Management ODL, and Certificate in Early Childhood Education as its stepping stone for the future development of other programs. The school also offers the MPU required courses and elective courses prepared for all certificate and diploma levels programs.

Besides that, the school is seriously concern about the current issues in the Muslim world. In facing the globalization challenges, our new generations are easily exposed towards negative influences. Some say that moral degradation is due to globalization but we beg to differ. In upholding the objective of college towards creating Islamic professionals, we want our students to move forward in line with globalization. Our strategy is by providing the students with strong foundation in understanding the teachings of Islam. The purpose of our education is to ensure that the students understand the contents of teaching and to enable them to internalize the values practically. In order to achieve this objective, FSS takes effort by organizing Usrah and Ibadah Camp or Intercultural programs.

These programs are considered as graduation requirement for the students. We believe that by organizing such programs, we are able to promote awareness to the students on the beauty of Islam and its role as the way of life; a path toward success. With firm basis in understanding the teachings of Islam, Insyallah our students could hinder themselves from immoral activities.

## ORGANIZATION CHART



## ABOUT DIPLOMA IN HALAL INDUSTRY MANAGEMENT PROGRAMME

**DIPLOMA IN HALAL MANAGEMENT (DHM)** The academic courses are developed and offered in this college following the growing need of human capital in the field of research and innovation related to the halal industry. The courses provide deeper understanding and strengthening theoretical and technical methodologies in its practices. Additionally, graduates will acquire knowledge and practice in the broad field of research and innovation in the halal industry.

### The Modules you will study

You will normally study five to six modules in each year. Each course is worth 3 credits and requires you to engage with at least 92 hours of learning time. This time will be spent in class contact (about 42 to 56 hours), private study and assignment preparation.

Each module is assessed through a mixture of written assignments, report, presentations and examinations.

## ENTRY REQUIREMENTS

- i. A pass in SPM with at least credit in any 3 subjects, or any equivalent qualification; **OR**
- ii. A pass in Sijil Tinggi Persekolahan Malaysia (STPM), with a minimum of Grade C (GP 2.0) in any subject, or any equivalent qualification; **OR**
- iii. A pass in Sijil Tinggi Agama Malaysia (STAM) with a minimum grade of Maqbul; **OR**
- iv. A pass in SKM Level 3 in a related field, and a pass in SPM with a minimum of 1 credit in any subject; **OR**
- v. Any qualifications equivalent to Certificate (Level 3, Malaysian Qualifications Framework, MQF)

NOTE: The HEPs are required to conduct screening and provide appropriate bridging courses specific to the discipline of the programme.

\* A student has to acquire 92 credit hours to complete this programme.

# DHM PROGRAMME STRUCTURE AND MODULE OVERVIEW



FACULTY OF SOCIAL  
SCIENCES(SOSS)

## LIST OF COURSES FOR DIPLOMA IN HALAL INDUSTRY MANAGEMENT (DHM) MATRIC NO. DHM212XXX AND ABOVE

### MPU COMPULSORY COURSES

| NO | COURSE CODE | COURSE NAME   | CREDIT HOURS | CONTACT HOURS | OFFERED BY | PRE-REQUISITE               |
|----|-------------|---|--------------|---------------|------------|-----------------------------|
| 1  | MPU2163 OR  | MALAYSIAN STUDIES (FOR LOCAL STUDENTS)  | 3            | 3             | SOSS       |                             |
|    | MPU2133     | BAHASA MELAYU KOMUNIKASI 1 (FOR INTERNATIONAL STUDENTS)                                       |              |               | CEL        |                             |
| 2  | MPU2213     | BAHASA KEBANGSAAN A (FOR LOCAL STUDENTS WHO DO NOT EARN CREDIT IN BAHASA MELAYU AT SPM LEVEL) | 3            | 3             | CEL        |                             |
|    | *MPU2233 OR | PRESENTATION SKILLS   |              |               | CEL        |                             |
|    | *MPU2263    | IT ESSENTIALS   |              |               | SICT       |                             |
| 3  | MPU2333 OR  | MEDIA AND SOCIETY   | 3            | 3             | SICT       |                             |
|    | MPU2343     | HUMAN RELATIONS   |              |               | SBLs       |                             |
| 4  | MPU2412 OR  | IBADAH CAMP (FOR MUSLIM STUDENTS)   | 2            | 2             | STADD      | Completed all Usrah Modules |
|    | MPU2422     | INTERCULTURAL PROGRAM (FOR NON MUSLIM STUDENTS)   |              |               | STADD      |                             |

TOTAL CREDIT HOURS FOR MPU COMPULSORY COURSES = 11

### COLLEGE COMPULSORY COURSES

| NO | COURSE CODE | COURSE NAME                      | CREDIT HOURS | CONTACT HOURS | OFFERED BY | PRE-REQUISITE |
|----|-------------|----------------------------------|--------------|---------------|------------|---------------|
| 1  | ARB1232     | INTRODUCTION TO ARABIC LANGUAGE  | 3            | 3             | CEL        |               |
| 2  | CES1231     | ENGLISH FOR INTERMEDIATE STUDIES | 3            | 3             | CEL        |               |
| 3  | CES1232     | ENGLISH FOR ADVANCED STUDIES     | 3            | 3             | CEL        | CES1231       |
| 4  | CES2233     | BUSINESS COMMUNICATION           | 3            | 3             | CEL        | CES1232       |
| 5  | DOM2236     | PUBLIC SPEAKING                  | 3            | 3             | SBLs       |               |

TOTAL CREDIT HOURS FOR COLLEGE COMPULSORY COURSES = 15

### CORE COURSES

| NO | COURSE CODE | COURSE NAME   | CREDIT HOURS | CONTACT HOURS | OFFERED BY | PRE-REQUISITE            |
|----|-------------|---|--------------|---------------|------------|--------------------------|
| 1  | DIS1231     | INTRODUCTION TO ISLAMIC 'AQIDAH                           | 3            | 3             | SOSS       |                          |
| 2  | DCI1234     | INTRODUCTION TO AL-FIQH                                   | 3            | 3             | SOSS       |                          |
| 3  | DCI2231     | INTRODUCTION TO USUL AL-FIQH                              | 3            | 3             | SOSS       |                          |
| 4  | DSI2233     | AL-QAWA'ID AL-FIQHIYYAH                                   | 3            | 3             | SOSS       |                          |
| 5  | BUS1231     | INTRODUCTION TO BUSINESS                                  | 3            | 3             | SBLs       |                          |
| 6  | BUS1234     | PRINCIPLES AND PRACTICE OF MANAGEMENT                     | 3            | 3             | SBLs       |                          |
| 7  | DHM1232     | INTRODUCTION TO HALAL MARKET AND VALUE-BASED MANAGEMENT   | 3            | 3             | SOSS       |                          |
| 8  | DHM1233     | HALAL ETHICS AND TOYIBAN CONCEPT IN PRODUCTS AND SERVICES | 3            | 3             | SOSS       |                          |
| 9  | DHM2231     | HALAL FOOD SCIENCE AND NUTRITION                          | 3            | 3             | SOSS       |                          |
| 10 | DHM2232     | HALAL STANDARD AND REGULATION                             | 3            | 3             | SOSS       |                          |
| 11 | DHM2233     | ISLAMIC BUILT ENVIRONMENT                                 | 3            | 3             | SOSS       |                          |
| 12 | DHM2234     | HALAL AUDIT AND CERTIFICATION                             | 3            | 3             | SOSS       |                          |
| 13 | DHM2235     | HALAL ENTREPRENEURSHIPS                                   | 3            | 3             | SOSS       |                          |
| 14 | DHM2236     | MEAT AND POULTRY INDUSTRY                                 | 3            | 3             | SOSS       |                          |
| 15 | DHM3231     | HALAL PHARMACEUTICAL, COSMETICS AND PERSONAL CARE         | 3            | 3             | SOSS       |                          |
| 16 | DHM3232     | HALAL CONSUMERISM AND CULTURE                             | 3            | 3             | SOSS       |                          |
| 17 | DHM3233     | MUSLIM FRIENDLY HOSPITALITY AND TOURISM                   | 3            | 3             | SOSS       |                          |
| 18 | DHM3234     | CONTEMPORARY ISLAMIC RULINGS ON HALAL ISSUES              | 3            | 3             | SOSS       |                          |
| 19 | DHM3235     | PRACTICAL TRAINING  | 6            | 6             | SOSS       | COMPLETE 14 CREDIT HOURS |

TOTAL CREDIT HOURS FOR CORE COMPULSORY COURSES = 60

TOTAL CREDIT HOURS FOR CORE COMPULSORY COURSES = 60

### ELECTIVE COURSES - TO CHOOSE ONLY THREE (2) COURSES

| NO | COURSE CODE | COURSE NAME                         | CREDIT HOURS | CONTACT HOURS | OFFERED BY | PRE-REQUISITE |
|----|-------------|-------------------------------------|--------------|---------------|------------|---------------|
| 1  | ACC3236     | INTRODUCTION TO E-COMMERCE          | 3            | 3             | SICT       |               |
| 2  | DOM2234     | PRINCIPLES OF ACCOUNTING            | 3            | 3             | SBLs       |               |
| 3  | IRK2232     | ISLAMIC IBADAH                      | 3            | 3             | SOSS       |               |
| 4  | IRK2235     | BIOGRAPHY OF PROPHET MUHAMMAD S.A.W | 3            | 3             | SOSS       |               |
| 5  | MAN3231     | INTRODUCTION TO MANDARIN LANGUAGE   | 3            | 3             | CEL        |               |
| 6  | SOS2233     | ISLAMIC ETHICS                      | 3            | 3             | SOSS       |               |

TOTAL CREDIT HOURS FOR ELECTIVE COURSE = 6

**TOTAL CREDIT HOURS TO COMPLETE PROGRAMME = 92**

\*Students with credit Bahasa Melayu in SPM must complete 3 credits from MPU2233 Presentation Skills or MPU2253 Process Writing or MPU2263 IT Essentials.

## ACADEMIC YEAR

### The Academic Calendar

| LONG SEMESTER               | DURATION<br>(Week) |
|-----------------------------|--------------------|
| Study Week                  | 14                 |
| End of Semester Examination | 1-2                |

The Programme Academic Year is divided into two semesters which are long and short semester.

| SHORT SEMESTER              | DURATION<br>(Week) |
|-----------------------------|--------------------|
| Study Week                  | 7                  |
| End of Semester Examination | 1-2                |

## CORE COURSE SYNOPSIS

### ***BUS1231 - INTRODUCTION TO BUSINESS***

This course presents a broad introduction to the functioning of the business enterprises through integrative framework. This course also introduces economics system as well as the essential elements of the business organization to include, operation management, marketing and human resource management.

### ***BUS1234 – PRINCIPLES AND PRACTICE OF MANAGEMENT***

This course is an introduction to the theory and practice of management and its application toward meeting modern business challenges and problems. The course will stimulate awareness on the importance of management, its functions, and practices in the organization or working environment. This course will provide an approach that covers the management function i.e planning, organizing, leading and controlling used by managers in the global business environment. The course will cover a very broad subject area for students to start with, before having an in depth comprehending on higher-level courses for business.

### ***BUS2234 - HUMAN RESOURCE MANAGEMENT***

This course covers the range of human resource functions, including recruitment and selection, employee training, performance management of individual employees, system for compensating and rewarding workers development of systems to improve productivity in organization, occupational safety and health, industrial relation and the right of employers to terminate the services of employment.

### ***DCT1236 - INFORMATION TECHNOLOGY FUNDAMENTAL***

The course begins by providing a general introduction to Information Technology. The students will be exposed to the hardware component that formed a computer such as input devices and output devices. The students will also be introduced to the basic of computer system and all the selected applications.

### ***DHM1232 - INTRODUCTION TO HALAL MARKET AND VALUE-BASED MANAGEMENT***

This course will introduce you to the Halal Industry which related to Halal market, Halal eco-systems, marketing strategies and Halal Hub. The second part of this course will introduce you with the Value-Based Management concept, in general and specifically for Halal Industry by referring to MS 2300 (2009).

### **DHM1233 - HALAL ETHICS AND TOYYIBAN CONCEPT IN PRODUCTS AND SERVICES**

This course aims to expose student about the concept of Halal and Toyyib in Shariah. This course is designed to provide students with general understanding on the concept of *halalan toyyiban* supply chain (HTSC) which is a contemporary approach to the global market. This study explores the supply chain process and discloses the practicalities in the production of *halal* meat. It focuses on storage of the poultry, which covers from farm to customer, in particular the identification of the HTSC critical control points along the process of the supply chain. The research also categorizes the food supply chain process into three phases i.e. pre-slaughtering, slaughtering and post-slaughtering.

### **DHM1234 - INTRODUCTION TO SHARI'AH**

This course provides general knowledge of the meaning and function of *Shari'ah* in regulating the process of *ijtihad*. This course could help students to have a better understanding of some major methodological problems and issues debated in Islamic ruling. It also highlights the practical application of *Shari'ah* methodologies which are relevant to their respective fields of specialization.

### **DHM2231 - HALAL FOOD SCIENCE AND NUTRITION**

This course offered to diploma students aims to expose student about the principles of processing, handling and storage of foods. As wholesomeness of food is a part of *toyyiban*, assessment of nutritional status, anti-nutritional factors, and dietary standards are paramount importance. The course will also place emphasis on the safety aspects and functional properties of non-nutritive constituents such as food additives, food enzyme inhibitors, pesticide residues etc.

### **DHM2232 - HALAL STANDARD AND REGULATION**

This course offered for diploma students which aim to expose student about the concept of Halal standard and regulation. This course is designed to provide students with general understanding on the concept of Halal law generally and specifically on halal standard and regulation. It discusses in details several standard and act related to halal guidelines. It also provides an opportunity to the student on how to follow the halal regulation and analysis the issues related to Halal law.

### **DHM2233 - ISLAMIC BUILT ENVIRONMENT**

This course will introduce you to the Islamic built environment, its characters, principles, and implementations. In this course, the students will be exposed what makes a built environment Islamic and why it is important.

### **DHM2234 - HALAL AUDIT AND CERTIFICATION**

This course offered for diploma students which aim to expose student about the concept of halal certification and audit. This course is designed to provide students with general understanding on the concept of halal certification process generally and application of halal audit specifically due to understand role of halal auditor, auditee and relevance halal certification reference document. It discusses in details pre and post on conducting halal certification and audit as Halal Executive. It also provides an opportunity to the student on how to conduct mock audit and verify halal certification bodies and their logo.

### **DHM2235- HALAL ENTREPRENEURSHIPS**

This course is an introduction and to provide conceptual understandings to Islamic economies and Islamic banking. Thus, enabling students to understand how *halal* and *muamalah* transaction are linked to economic systems, production, consumption and distribution according to Islamic worldview will be address in this course.

**DHM2236 - MEAT AND POULTRY INDUSTRY**

This course will introduce you to Halal food industry and how this corporate governance applies in Meat and poultry processing from Islamic prospective. It is important to know about Sharia'ah since it is mandatory for every Muslim to go for halal food and hall food processing. In this course, the students will be exposed what is meant by the concept of halal meat and poultry, their processing and it is importance.

**DHM3231 - HALAL PHARMACEUTICAL, COSMETICS AND PERSONAL CARE**

This course will introduce the students to the principles of halal and haram of the ingredients used in pharmaceuticals, cosmeceuticals and personal care products. It is fairly important to know about the related Malaysian Standards (MS 2424: 2012 and MS 2200-1: 2008) and their implementation in the related industry. In this course, students will also learn the critical points assessed in the production of halal pharmaceuticals, cosmeceuticals and personal care products.

**DHM3232 - HALAL CONSUMERISM AND CULTURE**

This course offered for diploma students which aim to expose student about the concept of Halal consumerism and culture. Islamic legal maxims (*al-qawa'id al-fiqhiyyah*). This course is designed to provide students with general understanding on the concept of Halal consumerism and culture in halal food industry. It also provides an opportunity to the student on how to settle some of the *fiqh* issues in their life in accordance of what being affirmed in related with consumerism and food culture.

**DHM3233 - MUSLIM FRIENDLY HOSPITALITY AND TOURISM**

This course will introduce you to the Hospitality and Tourism industry, criteria for Muslim Friendly Hospitality and Tourism industry, types of Muslim Friendly Hospitality and Tourism industry which includes hotel and resort, entertainment and related standards, acts and regulations.

**DHM3234 - CONTEMPORARY ISLAMIC RULINGS ON HALAL ISSUES**

This course offered for diploma students which aim to expose student about the concept of contemporary of Islamic ruling on halal issues. This course is designed to provide students with general understanding on the basic and alternative sources on determination of Islamic ruling. It discusses in details framework, objective and instrument on contemporary Islamic ruling. Five Islamic instruments rulings that give major consequences in the Muslim life. It also provides an opportunity to the student on how to apply the contemporary Islamic rulings on halal food and non food.

**DHM3235 - PRACTICAL TRAINING**

The objective of this practical training is to expose the student to real working environment and as well as to allow the students to practically apply the knowledge gained in all the courses that the students learned in this college. This also will ensure that the student has achieved the target and objective of studying in this college.

**DOM2234 - PRINCIPLES OF ACCOUNTING**

The course is designed to cater for the needs of a wide range of students. Students may choose the course for interest or to gain an insight understanding into accounting as a crucial course of study. Students would find the study of this course will help them adapt to, and cope with the challenge in business environment. In addition, the procedures used to process the business transactions can be applied into personal financial management.

## STUDENT COURSE ADVICE ASSISTANCE – DEPUTY DEAN

Student of Diploma in Halal Industry Management (DHM) and IIC in general shall consult Head of Program should they have enquiries of required assistance in choosing and registering new courses for respective semester.

Head of Programme also responsible to:

- explain and advice on the course structure
- education Counseling in addition to college counselor
- listen any comment related to programme or courses
- Inform the postponement of classes

### Assessment Plan on Core Subjects

A range of assessments are used including portfolios of work, case studies, reports, essays, open-book and closed-book examinations and presentations to assess the performance of students. They ensure that you experience a wide range of assessment methods. A number of modules make use of both in-course assessments and some form of examination. This helps to ensure that you develop information gathering skills, knowledge and understanding, application, analysis and evaluation of knowledge, presentation and writing skills, as well as ensuring the validity of the assessment process. This variety of assessment methods also allows the programme and module learning outcomes to be assessed in a systematic and appropriate way.

## STUDENT CODE OF CONDUCT

The purpose of the code is to monitor student's discipline. The code divide the offences into two categories, Minor offences and Major Offence

### Minor Offences

- Smoking
- Illegal assemblies
- Breaching traffic rules
- Purposely missing lectures/activities
- Cleanliness
- Contempt of college authority
- Disrupting class, administrative work or activities

### Penalty for Minor Offences

A student who is found guilty for a minor disciplinary offence shall adhere to the following disciplinary procedure.

- a) A written first warning shall be issued and a fine of RM10 shall be imposed by the Disciplinary Unit to the student informing the student of his or her offence and for the students to attend a meeting with the Disciplinary Unit within three days from the date of issuance of the first warning and the fine.
- b) If the student fails to meet with the Disciplinary Unit, a written second warning shall be issued to the student informing the student to meet with the Disciplinary Unit within three days from the date of issuance of the second warning and a fine of RM25 shall be imposed by the Disciplinary Unit.



- c) If the student fails to meet with the Disciplinary Unit for the second time, his or her failure to do so shall be considered as a major disciplinary offence and the student is subject to the punishment under rule 29.
- d) If the student commits the same offence for the third time on separate occasion, a fine of RM50 shall be imposed and a warning in writing shall be issued by the Disciplinary Unit to the student informing the student of his or her offence and for the student to attend a meeting with the Disciplinary Unit within three days from the date of issuance such warning and fine. If the student fails to meet with the Disciplinary Unit, his or her failure to do so shall be considered as a major disciplinary offence and the student is subjected to the punishment under rule 29.
- e) If the student commits the same offence for the third time on separate occasion, the offence shall then be considered as a major disciplinary offence and the student is subject to the punishment under rule 29.

### **Major Offences**

- Reproduction of College Materials
- Indecent Behaviors (\*Married couples please inform College)
- Vandalism
- Gaming
- Theft
- Drugs
- Drunk & Disorderly Behavior

### **Disciplinary Punishment for Major Offences**

A student who is found guilty of a disciplinary offence shall be liable to any one or any appropriate combination of two or more of the following punishment:

- Reprimand (stern warning)
- A fine not exceeding RM200
- Suspension from study for a specified period
- Suspension from any or all of the facilities of the College for a specified period
- Exclusion from any part of the College for a specified period
- Exclusion from the College
- Undergoing counseling session(s)

## STUDENT LEARNING SUPPORT SERVICES AND FACILITIES

### ACADEMIC SERVICES

The Academic services of the International Islamic College comprises of three main departments, headed by the Director of Academic. The main objective of these departments is to assist students in academic matters, especially in the relation to academic performance. These departments are actively involved in planning, implementing and monitoring academic policies and procedure to create a conducive, efficient and effective administrative environment for students in the process of learning. These departments are:

- **Scheduling and Examination Department (SED)**

The main function of this department is to coordinate and conduct the centre examination including placement test, processing the results and facilitating appeals for the re-check of answers scripts and re-admission.

- **Admission & Students Records Department (ARD)**

The main function is to manage, select and evaluate applications for admission, while maintaining and updating student's personal files.

- **Academic and Accreditation Department (AAD)**

The main function is to introduce an effective quality assurance management into the college processes and operations including preparing the MQA documentation.

|               |   |   |
|---------------|---|---|
| Service Hours | : | 8.30am – 5.30 pm  |
| Venue         | : | Level 1, West Wing, Academic Division – SED & ASR<br>Level 2, West Wing, Academic Division - AMQC |

### TAN SRI DATO' SERI SANUSI JUNID LIBRARY

The library in IIC is known as Tan Sri Dato' Seri Sanusi Junid Library. The TSDSSJ Library that provides resources, services, and other related facilities include the discussion room, carrel desk, reading area, locker and etc to meet the teaching and learning. The services provided include as below:

- Circulation & Information Counter
- Discussion Room
- Reading Area
- Carrel Tables
- Activity Room
- Computer Lab and Internet Wireless
- Past Year Exam Paper Collection (PYEP)
- Online Public Access Catalogue (OPAC)
- Lockers

**Operating Hours:**

| DAY                          | TIME            |
|------------------------------|-----------------|
| Monday - Friday              | 8.30am – 5.30pm |
| Monday – Friday<br>(Ramadan) | 8.30am – 4.30pm |
| Saturday, Sunday             | CLOSED          |
| Public Holiday               | CLOSED          |

Venue: Level 1, West Wing, Tan Sri Dato' Seri Sanusi Junid Library

## IT DEPARTMENT

Consultation Service: Service desk:

- Helping user solve problem and providing phone or direct consultation
- Creating user account, changing password, data request
- Troubleshooting all computer and network issue

**Operation Hours:**

| Day              | School Hour                           | Holiday |
|------------------|---------------------------------------|---------|
| Monday to Friday | 8:30am – 5.30pm                       | Closed  |
| Saturday         | Closed (*standby mode as per request) | Closed  |
| Sunday           | Closed (*standby mode as per request) | Closed  |

### Internet Services

Operation hour: 24 hours

Regulation of Internet surfing

- College shall not be held accountable for user's misconduct on Internet surfing.
- Internet users shall not arbitrarily changes computer IP address, without permission from computer center network administrator or residential advisor.
- Internet users shall not develop their own website, which may be misused
- Slow down the speed of the network.

Venue: Ground Floor, East Wing, IT Department

## STUDENTS AFFAIRS AND DEVELOPMENT DEPARTMENT (STADD)

The main objective of this division is to create awareness among the students on their role and functions as future leaders. It comprises of the following departments:

### Counseling Service (Student Counseling Office)

**Objectives:**

- a. To enhance students' self-understanding, problem-solving ability, social relationship, self-discovery to become independent.
- b. To assist students in searching a job according to their strengths and interests to achieve their own goals in career development.
- c. To ensure the welfare and the wellbeing of the student is well taken care off.

Venue: Level 3, East Wing, Students Affairs and Discipline Division

**Student Service Categories:****a. Individual and group counselling services**

Provide individual and group counseling to facilitate students to achieve self-understanding and self-growth in both life and work.

**b. Job searching/hunting**

Assist students in searching jobs based on their strengths and interests.

**c. Job searching information websites & notice boards**

Provide information of job vacancies and recruitments in the community.

**d. Seminars & workshops**

Invite guest speakers or specialists to give talks and share their experiences with students.

**Student Off-campus Accommodation:**

Current IIC accommodation is provided by RG Hostel Management (RGHM) which also IIC's strategic business partner. IIC and RGHM work very closely to ensure students' accommodation, and welfare off campus is well taken care off. The current locations of RGHM accommodations service are as follows:

| NO | HOSTEL                    |
|----|---------------------------|
| 1. | M3 Mall Apartment         |
| 2. | Hostel Meranti            |
| 3. | Sentul Junction Residency |

Transportation buses service is provided for students. Bus trips are based on the schedule of their respective classes.

**Student Development Assistance**

IIC offers various short courses or additional classes to build students' skills in various fields. Some courses are offered for free. The courses and extra classes are including:

- a. Workshops learning techniques
- b. Academic skills workshops such as writing skills, a study and the like.
- c. Personal development workshops such as Public Speaking, Grooming and Development, time management and etc.
- d. Technical assistance using the computer
- e. Seminars, Forums and Workshops organized from time to time on issues about their area of specialization, education and other issues.

Besides that, students can get academic advice through a variety of ways. IIC will provides an opportunity for students and open a discussion with students through individual and group meetings with the lecturer, course coordinator or Dean, who are scheduled each semester. These meetings aimed to get students respond directly and discuss the progress of students on academic matters. Apart from meetings, any student can make an appointment with the lecturer, course coordinator or Dean to discuss any problem

## **FINANCIAL SERVICES BY PTPTN**

Perbadanan Tabung Pendidikan Tinggi Nasional (PTPTN) has listed IIC as Grade 'A' college since 2004. This is due to the fact that IIC has fulfilled and met the PTPTN requirements in terms of application, distribution of offer letters, confirmation of status as well as confirmation of payment to the students' accounts.

## **OTHER FACILITIES**

- i. Cafeteria
- ii. Futsal Court
- iii. Badminton Court
- iv. Netball
- v. Music Lounge
- vi. Gym
- vii. Wireless Point / Computer Lab
- viii. Matric Card
- ix. Musolla
- x. IIC Great Hall

## **STUDENT RECEIVED**

**NAME:**

**DATE:**